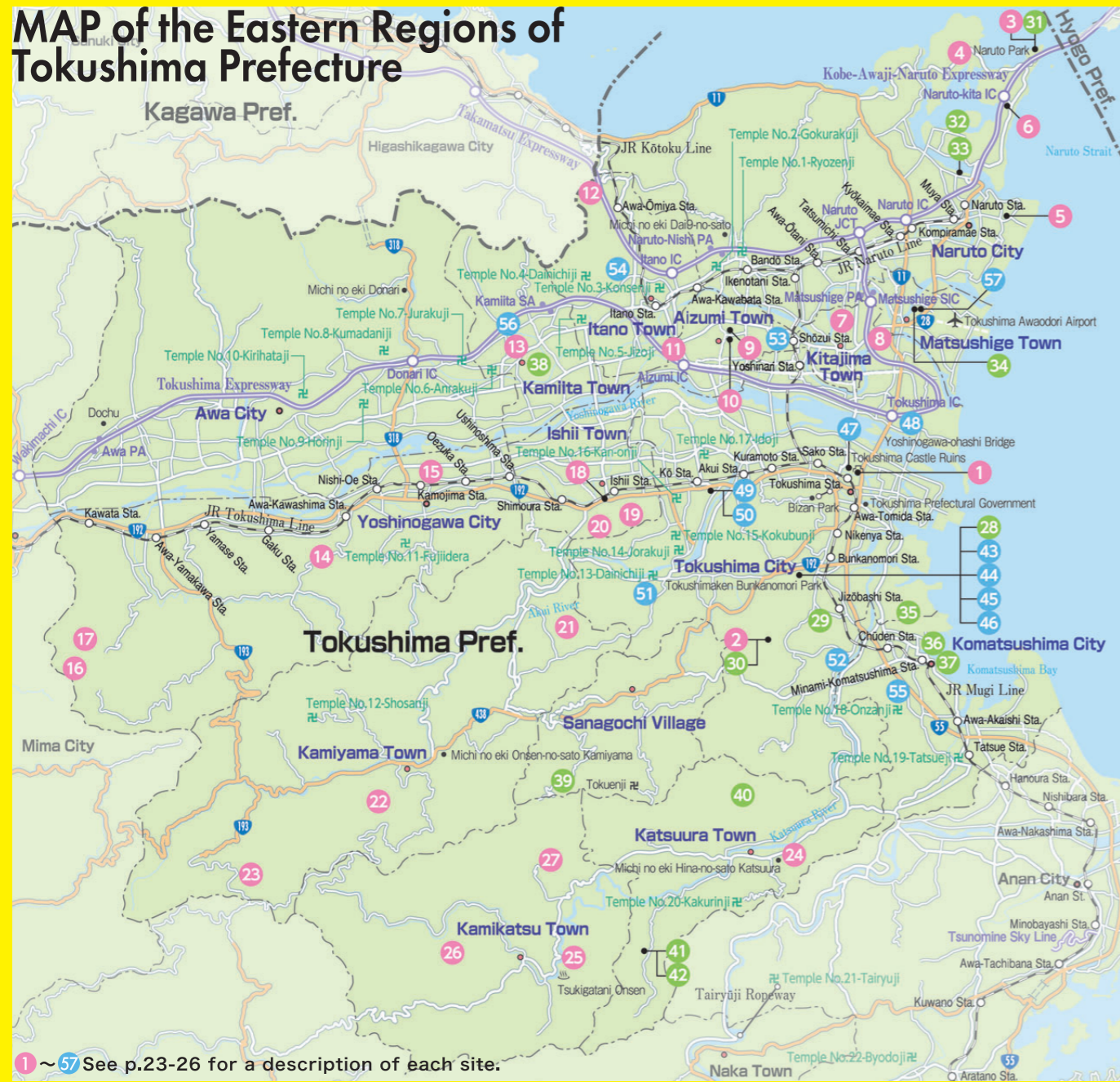


MAP of the Eastern Regions of Tokushima Prefecture



1 ~ 57 See p.23-26 for a description of each site.

East Tokushima Tourist Guidebook

Useful Information for Sightseeing

Tokushima Ryokan Association and Lodging Information Center
 1-4-2, Terashimahonchonishi, Tokushima-City
 TEL: (+81) (0)88-622-8556
 (Open from 2:00 PM to 6:00 PM)

Tokushima City Regional Tourist Information Station
 is open all year round (except January 1st), (Amiko Building B1F) 1-24, Motomachi, Tokushima-City
 TEL: (+81) (0)88-635-9002 (Reception Open from 10:00 AM to 7:30 PM)

Tokushima Prefectural International Exchange Association
 Clement Plaza 6F, 1-61 Terashima Honcho Nishi, Tokushima City
 TEL: (+81) (0) 88-656-3303
 Open from 10:00AM to 6:00PM

Tokushima Omotenashi Taxi:

A taxi service operated by a driver who has passed an examination of tourism in Tokushima. Call the following number to request a taxi
 TEL: (+81) (0)88-622-6789 (Reception Open from 8:00 AM to 10:00 PM)



The Official Tokushima Sightseeing App, the "Tokushima Tabi Plus"



Disaster Information

Anshin Tokushima:
 Please check here for emergency disaster information (Tokushima Prefecture Disaster Prevention and Crisis Management Information).
 URL: <https://anshin.pref.tokushima.jp/>

Wi-Fi Hotspot Info.

Tokushima Free Wi-Fi Information Site
 URL: <https://tokushima-wifi-navi.jp/>



Access to Tokushima

By airplane

From Haneda Airport: Approx. 1 hr 10 min. to Tokushima
 From Fukuoka Airport: Approx. 1 hr to Awaodori Airport

Highway Bus

From Osaka Station: Approx. 2 hrs 30 min. or 3 hours to Tokushima Station
 From Kansai Airport: Approx. 3 hrs to Tokushima Station
 From Kobe: Approx. 2 hrs to Tokushima Station
 From Nagoya: Approx. 6 hrs to Tokushima Station
 From Tokyo: Approx. 9 hrs 30 min. to Tokushima Station

By car

From Suita IC: Approx. 2 hrs to Tokushima
 From Kurashiki JCT: Approx. 2 hrs to Tokushima
 From Fukuoka IC: Approx. 6 hrs 30 min. to Tokushima
 From Tokyo IC: Approx. 7 hrs to Tokushima

See here for sightseeing information about the eastern area of Tokushima Prefecture



● Issuance and Inquiries: East Tokushima Tourism Authority (7F Tokushima Center Building) 2-7, Yaoyamachi, Tokushima City 770-0841
 ※The courses featured in this magazine are for your reference. Please confirm the traffic/transportation status and business days in advance. The distances and times indicated are approximate estimates. They will vary depending on the traffic status and the course. *Data current as of March 2023. Please note that the schedule is subject to change.

East Tokushima

The eastern part of Tokushima Prefecture is closely connected with the Kansai region as the gateway into Shikoku.

In addition to being connected to the Imperial Family from ancient times, many historical figures including the Buddhist monk Kōbō Daishi visited Awa province present day Tokushima prefecture. After 1585, the Hachisuka family ruled Awa province and Awaji island under the name of the "Tokushima domain."

The traditional cultures of Tokushima such as Aizome-dye, Awa Odori and the Awa Ningyo Jōruri traditional Japanese puppet theater have been handed down from generation to generation.

During the Edo period from the 17th century to the 19th century, the Tokushima domain prospered due to the cultivation of indigo-dye, and the "Awa Ai-indigo" became a top branded dye in Japan. The Ai-indigo merchants of the Tokushima domain sold Awa-Ai indigo all over Japan and brought back the dances and songs from these various places to spread it back to the local people.

The home of the Ningyo Jōruri is Awaji, and the Tokushima domain invited Awaji ningyo theater groups to the castle town of Tokushima-jo castle to perform. This became popular in various regions of Awa province.

The Awa-Odori dance festival originated from the Bon Festival dance that was held in the castle town of Tokushima, and it became popular with the times under the influence of other dances and songs from all over Japan, leading to the Awa-Odori of today.



Japan fought Germany in World War I, and about 1000 Germans were sent to a POW camp built in Bando, Naruto City in 1917. They introduced the culture and technology of Germany to the local people and formed some orchestras in the camp. They also performed Beethoven's Ninth Symphony for the first time in Japan.



In 1869, the Tokushima domain became the Tokushima Prefecture and started on the road to modernization. During the Showa period (1926 ~ 1989), a series of wars broke out one after another, and in July 1945, the urban area of Tokushima was devastated by a great air raid by U.S. forces. The Awa Odori was revived in 1946 and is now the largest summer festival in Japan.

Since the opening of the Ōnaruto Bridge and Akashi Kaikyō Bridge, it has become easier to get to Tokushima so many people from around the world can come and visit.



© Tokushima City

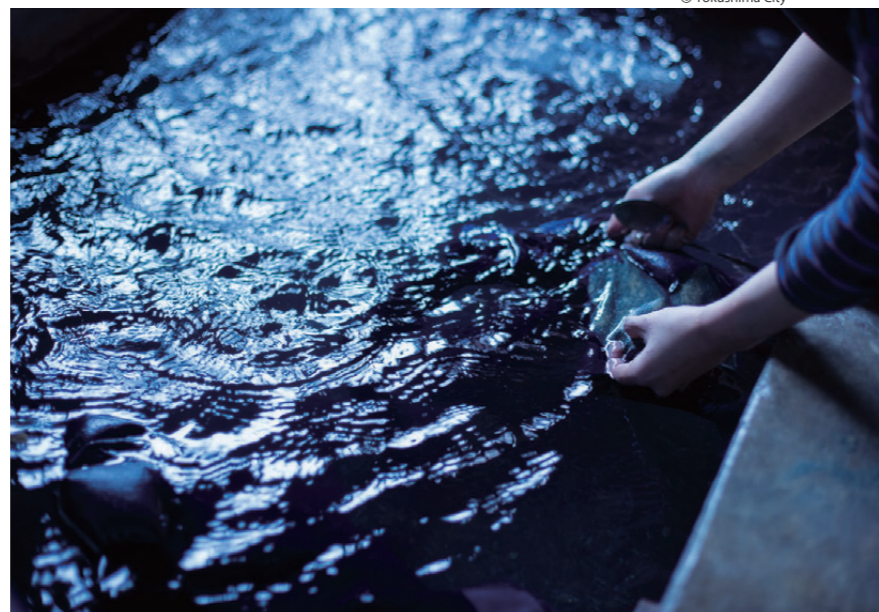
Indigo-Dye

The indigo-blue design was chosen as the official emblem for the 2020 Tokyo Olympic and Paralympic Games. In May 2019, Tokushima's indigo and indigo dyeing culture were designated as a Japanese Heritage.

In Tokushima prefecture during the Muromachi period from the 14th to the 16th, the middle and lower reaches of the Yoshinogawa River frequently flooded, giving way to the spread of indigo cultivation due to the fertile soil and climate carried by floods and turning the land suitable for cultivation. During the Edo period when cotton clothing spread throughout the country, demand for indigo grew as a dye. With the encouragement of the Tokushima domain to grow indigo plants, an indigo dye named the "Awa Ai" monopolized the market of Japan.

An indigo dye called the "Japan Blue"

An Englishman who visited Japan during the Meiji period called the color of the indigo colored kimono, which was worn by the Japanese people at that time, Japan Blue. Although indigo dyeing declined due to the influence of chemical dyes, the technique has been handed down and its popularity is increasing again.



© Tokushima City

Let's experience Aizome-indigo dyeing

STUDIO N2



A unique dye from all-natural indigo is created to dye clothing by hand.
 ●Kokuwajima, Muya-cho, Naruto-City
 TEL: (+81) (0)90-7787-7610
 URL: <https://www.entwo.com/>
 Available from 2 people. Open: Mon, Fri, Sat, Sun and holidays. Reservation reqd. Approx. 2 hrs. Eco-bag (incl. Material dyes) 4,200yen.

Aizome Workshop, the Ruafu



Many families take part in the indigo-dyeing experience using the traditional techniques handed down for generations.
 ●6-42, Yoshinohon-cho, Tokushima-City
 TEL: (+81) (0)80-2983-7550
 URL: <http://www.indigo-dyeing.sakura.ne.jp/>
 Reservations must be made a day before

Hon Aizome Yano Factory



Continuing to honor and protect the traditional indigo-dyeing techniques since the Edo period.
 ●Yakami, Aizumi-cho, Itano-County
 TEL: (+81) (0)88-692-8584
 URL: <http://yanokozyo.com/>
 Reservations must be made a day before

Furushozome Factory



A workshop making handmade original dyes that have continued since the Edo period.
 ●9-12, Sakoshichiban-cho, Tokushima-City
 TEL: (+81) (0)88-622-3028
 Reservations must be made a day before

Awa Ningyo Jōruri

Traditional Japanese puppet theater

Traditional performance art in which the storytellers, shamisen players, and puppets come together to perform a play

This puppet theater was loved by both feudal lords and commoners

To the accompaniment of the shamisen, the narrator, the "Tayu" advances the story while the puppets controlled by the three puppeteers perform the "Ningyo Jōruri" play. During the Edo period, the Tokushima domain invited an Awaji Ningyo-za Theater, the home of the Ningyo Jōruri, to the castle town of Tokushima-jo castle and had it performed around Tokushima prefecture.

In Tokushima, the Ningyo Jōruri was often



Inugai-Nouson-Butai (The Inugai Rural Theater Stage in Tokushima City)

performed at an outdoor farm village stage, so large dolls were used and performed with exaggerated actions, which became a feature of the "Awa Ningyo Jōruri."

Although there are many Ningyo-za theater groups in Tokushima, Mr. Martin Holman, a scholar of puppet theater from the United States, started a puppet theater group called the "Tokubeiza" in Tokushima City in October 2019. While maintaining the traditions of the Ningyo Jōruri, he is actively working on new forms of this performance art.



Members of the Tokubeiza puppet group. See their Facebook page for info about their activities.

The Tokushima Prefectural Awa Jurobe Yashiki (Puppet Theater and Museum)

A local Ningyo-za theater regularly holds Ningyo Jōruri performances at 11:00 AM and 2:00 PM every day. The museum offers puppet exhibits for hands-on experience controlling the puppets.

© Tokushima City



●-184, Miyajima-Motoura, Kawauchi-cho, Tokushima-City
 TEL: (+81) (0)88-665-2202
 Open from 9:30 AM to 5:00 PM (open until 6:00 PM during summer)
 Closed from December 31st to January 3rd

Please make inquiries and applications with the Awa Jurobe Yashiki
 TEL: (+81) (0)88-665-2202
 Reservation is required by 5:00 PM Wednesday.

The Matsushigecho Archival Museum of History and Folklore, and the Ningyo Jōruri Theater Archival Museum

Features the historical archives of the town of Matsushige. There is a free performance of the Ningyo Jōruri at 2:00 PM on the 3rd Saturday of every month.

●-11-1, Hiroshima-Yonbangoshi, Matsushige-cho, Itano-County
 TEL: (+81) (0)88-699-5995
 Open from 9:00 AM to 5:00 PM (open until 9:00 on Thursdays)
 Closed on Mondays (Tuesdays if it is a public holiday), every 3rd Tuesday of the month (open if it is a public holiday), and from December 28th to January 4th



The Tokushima Jōruri Cruise

Cruise boats running from the Shinmachi-gawa River Mizugiwa Park in Tokushima City to the Awa Jurobe Yashiki. The cruise departs every Sunday from April to October at 10:00 AM and finishes at 2:00 PM.



Awa Dance Festival



The Awa Odori has a history of over 400 years

Awa Odori is based on the Bon Festival that was performed in the castle town of Tokushima during the Edo period. The merchants of the Ai-indigo brought back the songs and dances from all over Japan to Tokushima, which developed into the Awa Odori.

In August, during the Awa Odori festival held in Tokushima City, about 1,000 groups of dancers called "ren" dance for hours around town. The combined total number of people enjoying the festival reaches a million people, including the spectators. Do take the opportunity to dance along, the steps are simple and easy for beginners.

The Summer Awa Odori

Tokushima City

Dates: from August 12th to the 15th
TEL: (+81) (0)88-621-5232
(Tokushima City Nigiwai Koryu Division)

During the festival, the center of the city is opened for pedestrians and dances from 5:00 AM to 10:00 PM. During the festival, performances are held inside the halls during the day, and on August 11th, a special performance is held on the eve of the festival.

Naruto City

Dates: from August 9th to the 11th
TEL: (+81) (0)88-685-3748
(Naruto Awa Odori Executive Committee)

A performance theater and stage will be located on the west side of Naruto Station.

Yoshinogawa City

Dates: from August 14th to the 16th
TEL: (+81) (0)883-24-2274
(Yoshinogawa Chamber of Commerce and Industry)

The area around Kamojima Station will turn into a field of dancing and festivities.

Awa City

Dates: Early August
TEL: (+81) (0)883-35-4211
(Awa City Tourism Association)

Held at the plaza besides the "Aeruwa" facility.

The Spring Awa Odori

Dates: Sat and Sun in mid-April

TEL: 090-5214-2737
(open on weekdays from 9:30 AM to 5:30 PM)
(Hana Haru Festa Executive Committee)



The "Hana Haru Festa" event features performances of the Awa Odori dancing at Aibahama Park.

Awa Odori in Autumn

Dates: Sat and Sun in early November

TEL: (+81) (0)88-624-5111
(Tokushima Tourism Association)



Enjoy a gorgeous performance of the Awa Odori at the "ASTY Tokushima" hall. Admission is free!

The Shikoku Pilgrimage

Kōbō Daishi, the founder of the Shingon sect of Buddhism, was born in 774 in Kagawa Prefecture and trained in Shikoku when he was young. This pilgrimage is a journey to 88 Buddhist temples on Shikoku that are associated with Kōbō Daishi. Tokushima Prefecture is the starting point for many this pilgrimage.



Sometimes Shikoku residents will offer teas, sweets, and accommodation to people making the pilgrimage as part of a tradition called "osettaï".

This practice is meant to treat the people just like Kōbō Daishi and show their support. Feel free to accept their generosity and interact with the local people and other pilgrims.

The 20 pilgrimage temples in eastern Tokushima Prefecture

1st	Ryōzen-ji Temple TEL: (+81) (0)88-689-1111	2nd	Gokuraku-ji Temple TEL: (+81) (0)88-689-1112
3rd	Konsen-ji Temple TEL: (+81) (0)88-672-1087	4th	Dainichi-ji Temple TEL: (+81) (0)88-672-1225
5th	Jizō-ji Temple TEL: (+81) (0)88-672-4111	6th	Anraku-ji Temple TEL: (+81) (0)88-694-2046
7th	Jōraku-ji Temple TEL: (+81) (0)88-695-2150	8th	Kumadani-ji Temple TEL: (+81) (0)88-695-2065
9th	Hōrin-ji Temple TEL: (+81) (0)88-695-2080	10th	Kirihata-ji Temple TEL: (+81) (0)883-36-3010
11th	Fujii-dera Temple TEL: (+81) (0)883-24-2384	12th	Shosan-ji Temple TEL: (+81) (0)88-677-0112
13th	Dainichi-ji Temple TEL: (+81) (0)88-644-0069	14th	Joraku-ji Temple TEL: (+81) (0)88-642-0471
15th	Kokubun-ji Temple TEL: (+81) (0)88-642-0525	16th	Kannon-ji Temple TEL: (+81) (0)88-642-2375
17th	Ido-ji Temple TEL: (+81) (0)88-642-1324	18th	Onzan-ji Temple TEL: (+81) (0)885-33-1218
19th	Tatsue-ji Temple TEL: (+81) (0)885-37-1019	20th	Kakurin-ji Temple TEL: (+81) (0)885-42-3020

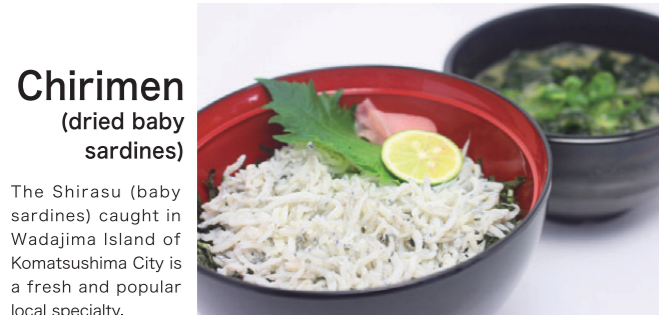
Tokushima Cuisine



Hamo-Conger
Tokushima prefecture is one of the largest fisheries of the Hamo-conger in Japan, shipping large quantities to Kyoto and Osaka.



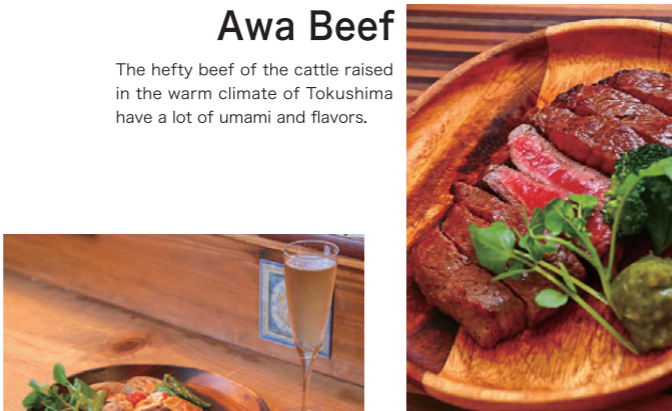
Ayu-Sweetfish
The Ayu-sweetfish grown in the clear streams of eastern Tokushima Prefecture is of superb quality.



Chirimen (dried baby sardines)
The Shirasu (baby sardines) caught in Wadajima Island of Komatsushima City is a fresh and popular local specialty.



Awaodori-chicken
One of the top brand free-range chicken in Japan. Great textures and flavors.



Awa Beef
The hefty beef of the cattle raised in the warm climate of Tokushima have a lot of umami and flavors.



Awabiton-Pork
The pork raised in the clear air and greenery is well-marbled and flavorful.



Naruto Sea Bream
The fine and high-quality Naruto sea bream grow in size and leanness from enduring the harsh whirlpools.



Mametentama
This Kansai-style okonomiyaki features sweet kintoki red beans and tempura for its ingredients.



A popular local noodle dish

Tokushima Ramen Noodles
Features sweetly-braised pork belly over the Tonkotsu-pork and soy sauce based soup . Each shop serves their own unique soups.
Image courtesy of Ramen Todai



Naruchuru Udon Noodles
Features a seafood-based soup with soft, irregularly-shaped udon noodles.
Image courtesy of Oi Shokudo

Tarai Udon ("washbasin noodles")
A local dish of Awa City where Udon noodles are served in a large wooden washbasin.
Image courtesy of Awa City

Calendar

Food Name	Seasonal Availability											
	January	February	March	April	May	June	July	August	September	October	November	December
Naruto Wakame Seaweed		Harvest										
Naruto Sea Bream			Fishing									
Hamo-Conger						Assorted Fishing						
Ayu (farmed sweetfish)						Shipment						
Chirimen (Shirasu baby sardines)						Shipment						
Strawberry			Harvest									
Grape							Harvest					
Chozō Mikan			Shipment									
Mikan (Oranges)							Harvest					
Yuko Citrus										Harvest		
Yuzu Citrus							Harvest (Shipment year-round)					
Sudachi Citrus							Harvest (Shipment year-round)					
Naruto Rakkyo					Harvest							
Naruto Kintoki (Sweet-Potato)							Harvest (Shipment year-round)					
Carrot				Harvest								
Lotus Root			Harvest (Shipment year-round)									
Bamboo Shoot			Harvest									
Sweet Corn						Harvest						

Famous foods and products of Tokushima



Sudachi

The feature citrus of Tokushima. Its citrus juices can be enjoyed over various kinds of cuisines.



Naruto Kintoki

This sweet potato is characterized by its deep red color, along with its rich sweetness and soft texture.



Chozō Mikan

Oranges stored during the winter and shipped between February and March are juicier and have higher sugar content.



Image courtesy of JA

Sakuramomo Strawberry

A rare strawberry made only in Sanagochi village. It's big, sweet and juicy.



Image courtesy of Tani Chikuwa

Takechikuwa and Fish Cutlet

The Takechikuwa is a grilled minced fish wrapped in green bamboo, while the fish cutlet is a fried minced fish that covered in bread crumbs.



Image courtesy of Uzushio Shokuhin

Naruto Wakame

This seaweed grown in the strong current of Naruto has great texture.

Awa Odori Bamboo Dolls

A doll made from bamboo that vividly expresses the movements of the hands and feet of the Awa Odoridancers



Yusanbako (play box)

A cute nest of boxes that the children in Tokushima used to bring to view the cherry blossoms.

Aizome (indigo dyeing) and Awashoishijira Weaving

The Shijira weaving is a special fabric of Tokushima with a rugged surface and keeps the wearer cool.



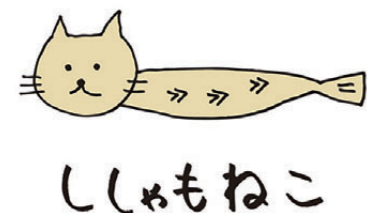
Awa Uiro

The traditional steamed sweets of Tokushima that is made from azuki beans and mochi flour.



Awa Wasanbon Toh

Tokushima's traditional high-quality sugar made from sugar cane.



Shishamo Cat Goods

The mascot of Kitajima Town, with the head of a cat and the body of a shishamo (smelt fish).



Local Sake

Tokushima is blessed with nature and its water is flavorful and used to make delicious local sake.

Ume-Plum Wine

Misato, Yoshinogawa City is a special district known for the unique ume-plum wines made there.



Tokushima Event Calendar

[Morning Market & Marche]
 Tokushima City's Surprise Sunday Market (Every Sunday)
 Tokushima City's Marche (last Sunday of every month)
 Tokushima City's Tomoni SunSun Market (3rd Sunday of every month)
 Komatsushima City's JF Komatsushima Minato Seafood Morning Market (every Mon, Tues, Thurs, Fri and Sat)
 Sanagochi Village's Shakunage Market (2nd and 4th Sunday of every month)
 Matsushige Town's Matsushigete Marche (2nd and 4th Sunday of every month)

January

Tokushima City's Ebisu Festival
 Kamiyama Town's Taisan-ji Temple "Chikaramochi" (Strength Competition)
 Strawberry Picking



February

Tokushima City's Tokushima Castle Museum Hina Matsuri Festival
 Komatsushima City's Yoshitsune Muso-sai Festival
 Katsuura Town's Original Big Hina Matsuri Festival



March

Naruto City's Spring Whirlpool Festival
 Kamiyama Town's Agawa Umenosato Ume Matsuri Festival
 Yoshinogawa City's Misato Ume-no-Hana Matsuri Festival
 Katsuura Town's Katsuura Cherry Blossom Festival



April

Tokushima City's Hanaharu Festival (Awa Odori)
 Naruto City's Otani-Yaki Spring Festa
 Komatsushima City's Haru-no-Kincho Matsuri Festival
 Kitajima Town's Tulip Park (best dates)
 Ishii Town's Fuji Matsuri Festival
 Kamiyama Town's Ono Sakurano Stage Performance
 Yoshinogawa City's Takagai Ishizumi Shibazakura Festival



May

Tokushima City's Machi ★ Asobi (Anime and game events)
 Aizumi Town's Aizumi Spring Rose Festival
 Awa City's Open Garden
 Yoshinogawa City's Funakubo Azalea Park (best dates)
 Retracing the Road of Kukai in Yoshinogawa City, Awa City, and Kamiyama Town



June

Katsuura Town's Opening of Ayu-sweetfish Fishing Season
 Naruto City's Performance of Symphony No. 9 by Beethoven
 Yoshinogawa City's Misato-no-Hotaru (Firefly) Kamikatsu Town's Fujikawatani Village Hotaru-Firefly Viewing Party
 Opening of Mountaineering Season at Mt. Benten in Tokushima City



July

Tokushima Ai-no-Hi (July 24)
 Tokushima City's Retra Water Festival
 Tokushima City's Awa Odori Kaikan Matsuri Festival
 Tokushima City's Yoshinogawa Festival
 Komatsushima City's Port Festival
 Sanagochi Village's Hydrangea Festival



August

Ishii Town's Ishii-cho Noryosai (Summer Night) Festival
 Naruto City's Awa Odori Dancing
 Tokushima City's Awa Odori
 Yoshinogawa City's Awa Odori
 Awa City's Awa Odori
 Grape Picking in Yoshinogawa City and Awa City



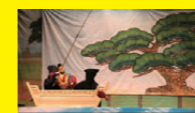
September

Komatsushima City's Tatsue Hachiman-jinja Shrine Autumn Festival (column fireworks)
 Komatsushima City's Motonei Fireworks Festival
 Matsushige Town's Sky Festa Matsushige
 Tokushima City's Night Zoo



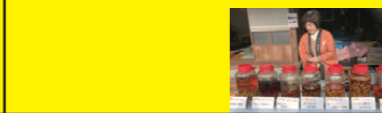
October

Tokushima City's Machi ★ Asobi
 Komatsushima City's Yokosu Fireworks Festival
 Komatsushima City's Tengu-Shibaki (Tatue Akiba-jinja Shrine Festival)
 Katsuura Town's Orange Picking
 Katsuura Town's Awa Ningyo Joruri Shibai Festival in Katsuura
 Katsuura Town's Sakamoto-Akari-no-Sato
 Yoshinogawa City's Daikiku-Ningyo Dolls and Kikuka Flower Exhibition



November

Tokushima City's Awa-no-Tanuki Matsuri Festival
 Tokushima City's Autumn Awa Odori Dancing
 Tokushima City's Inukai Rural Stage Awa and Ningyo Joruri Performance
 Special Public Opening of Tokushima City's Joroku-ji Temple
 Naruto City's Otani Pottery Festival
 Aizumi Town's Aizumi Autumn Rose Festival
 Yoshinogawa City's Misato Ume-Plum Wine Festival
 Kamiyama Town's Kamiyama Artist In Residence



December

Naruto City's Naruto German House Illumination & Christmas Market
 Tokushima City's Winter Illumination at Tokushima Bunri University
 Tokushima City's Yumenarie Castle Memorial
 Ishii Town's Ishii Winter Illumination
 Kamiyama Town's Orono-Akari-no-Objet d'art
 Itano Town's Asutamuland Happy Christmas
 Yoshinogawa City's Stone Light-Up at MisatoTakagai



A 1-day walking tour around Tokushima

1. Shinmachigawa / Awa Papermaking Waterfront Park

A waterfront park along the Shinmachigawa River that flows through the center of Tokushima City. LED lights go up and shine at night. There is also a monument of Setouchi Jakucho, a famous writer from Tokushima.

●Minamiuchi-machi, Tokushima-City



A monument to Ms. Jakucho.

2. Hyotanjima (island) Cruise

The central part of Tokushima City is a river island surrounded by rivers and is called Hyotanjima (island) because of its shape. You can go around Hyotanjima (island) on a cruise ship operated by a non-profit organization called the "Shinmachi Preservation Committee run by citizen volunteers.



Mr. Hideo Nakamura, chairman of the "Shinmachi River Protection Group."

●Free boarding fee (but insurance fee is required). The cruise will be about 30 minutes. Generally in operation every day, but *Operation will be suspended on New Year's Day and during bad weather ※As of March 2020 300yen
TEL: Shinmachi Preservation Committee (+81) (0) 90-3783-2084

3. Tokushima Bizan Ten-jinja Shrine

Many visitors come here to pray for success in entrance exams and academic achievements.

●2-21, Shinmachibashi, Tokushima-City / TEL: (+81) (0) 88-622-9962



"Himemiya-san"

4. Awa Odori Kaikan



A place where you can enjoy authentic Tokushima Awa Odori all year round. There is also a souvenir shop, the Awa Odori Museum, and the Bizan Ropeway Station.

●2-20, Shinmachibashi, Tokushima-City / TEL: (+81) (0) 88-611-1611
4 daytime performances and 1 evening performance
The second Wednesday of February, June, October, and the year-end and New Year holidays.



★Awa Odori Dancing Experience

After the end of every day and night time performances, there is a time for the audience to dance together.



5. Awagin Bizan Ropeway

If you take the ropeway from the Awa Odori Kaikan, you can reach the top of Mt. Bizan in about 6 minutes.

●(5F Awa Odori Kaikan) 2-20, Shinmachibashi, Tokushima-City / TEL: (+81) (0) 88-652-3617
Open 365 days a year (excluding maintenance days)



6. Summit of Mt. Bizan

From the observation deck, you can see Tokushima city, the sea and Yoshinogawa river. The park on the top of the mountain is famous for its cherry blossoms.



The summit of Mt. Bizan is also popular for cherry blossom viewing.

One of the largest LED kaleidoscope monuments in Japan.

Restaurant

Inotani Main Store



●4-25, Nishi Daiku-machi, Tokushima-City
TEL: (+81) (0) 88-653-1482
Open from 10:30 AM to 5:00 PM (will be closed after sold-out) Closed on Monday



A famous and established restaurant for Tokushima ramen. Near Teramachi.

Cafe

Taki-no-Yakimochi Wada-no-Ya Main Store

●5-3, Otakiyama, Bizan-cho, Tokushima-City
TEL: (+81) (0) 88-652-8414 Open from 10:00 AM to 5:00 PM / Closed on Thursdays



A store famous for its Japanese sweets the "Taki-no-Yakimochi" made with rice flour and sweet bean paste. The shaved ice is popular in summer.

7. The Neighborhood of Teramachi

An area with many Buddhist temples. It is popular as a quiet place to stroll.

●Teramachi, Tokushima-City

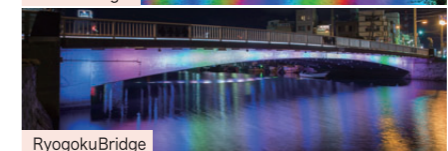
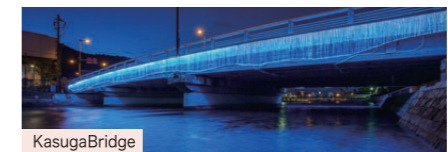


The natural water flowing from the corner of Teramachi is free to drink.

8. LED Bridge Tour

© Tokushima City

Some bridges over the Shinmachi River are decorated with LED lighting art.



9. Night at the Bar Alleyway

Tokushima's entertainment district has a narrow, old-fashioned street with numerous small and cozy bars. Check out the home page of "Tokushima Uraoji Sakaba Tankyukai (Research Association of Tokushima Back Alleyway Sake Bar)."

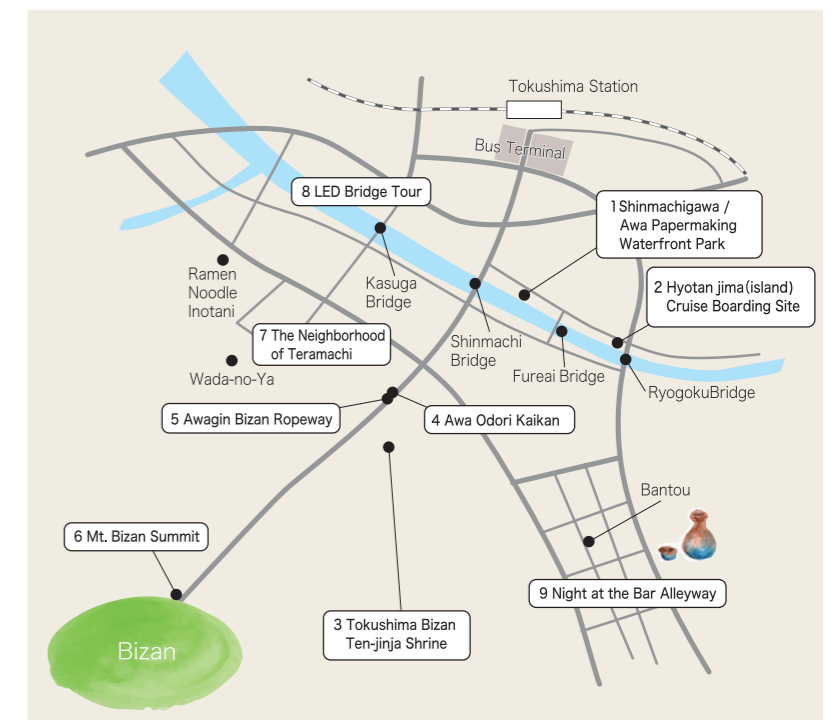
●"Tokushima Uraoji Sakaba Tankyukai"
URL: <https://uraroji.net/>



"Oden Bantou" (1, Takajo-machi, Tokushima-shi
TEL: (+81) (0) 88-655-2225)



- JR Tokushima Station
- 6 minute by walk
Shinmachigawa / Awa Papermaking Waterfront Park
 - 5 minute by walk
Hyotanjima(island) Cruise Boarding Site
 - 10 minute walk
Tokushima Bizan Ten-jinja Shrine
 - 1 minute by walk
Awa Odori Kaikan
 - 1 minute by walk
Awagin Bizan Ropeway
 - Get down using the ropeway and a 3-minute walk from Awa Odori Kaikan.
Mt. Bizan Summit
 - 5 minute walk from Teramachi to Kasugabashi
The Neighborhood of Teramachi
 - 10 minute walk from RyogokuBridge to Takajomachi
LED Bridge Tour
 - Night at the Bar Alleyway



A 1-day tour featuring Indigo Dye

1. The Tokushima Castle Museum

Stores and exhibits valuable historical materials of the Tokushima domain owned by the Hachisuka family during the Edo period. You can also see the daily lives of the indigo merchants in the castle town.

●-1-8, Jonai, Tokushima-cho, Tokushima-City
TEL: (+81) (0) 88-656-2525

Open from 9:30 AM to 5:00 PM,
Open until 4:30 PM / Closed on Mondays (Open if it is a national holiday), the day after a national holiday (but will be open on Saturdays, Sundays and holidays), End of Year and New Year holidays



The Goten Garden in Front of the Former Tokushima Castle

A garden from the Momoyama period enjoyed by the feudal lords that is rare in Japan. Take a relaxed and leisurely walk. Admission: ¥50 (Visitors to the museum are free to enter the garden).



There is a natural bluestone bridge that is 10 meters long at the Karesansui rock garden.

2. Aizumi Town History Museum, the Ai-no-Yakata

A rare museum in Japan that specializes in the Ai-indigo. This museum was built using the former residence of the Okumura family who was a major merchant of the Ai-indigo. There is also an exhibition of paper dolls that recreates the production process.

●-172, Tokumeimaezunishi, Aizumi-cho, Itano County
TEL: (+81) (0) 88-692-6317

Open from 9:00 AM to 5:00 PM,
Closed on Tuesdays (open if it is a national holiday), End of Year and New Year Holidays



★Hands-on Ai-indigo dyeing experience

Experience indigo dyeing using the all-natural indigo of the Ai-no-Yakata. Try dyeing your own handkerchief.



Restaurant The Aquier

Farm-Operated Seasonal Dining, The Aquier

●-1-119, Okuno-Wada, Aizumi-cho, Itano County
TEL: (+81) (0) 88-678-2253
Open from 11:30AM to 2:00PM, from 5:30PM to 10:00PM
Please see website for days closed
URL: <https://www.aquier.com>



A restaurant run by a hydroponic company featuring many fresh vegetables. You can enjoy pasta and herb teas made with Ai-indigo powder.

3. Jizo-ji Temple Okunoin, The Gohyaku Rakan

Located 5 minutes away on foot from Jizo-ji Temple, the 5th temple of the Shikoku pilgrimage. Visitors will be fascinated by the rich expressions of the hundreds of life-sized wooden Buddhist statues.

●5, Rakan-hayashihigashi, Itano-cho, Itano County
TEL: (+81) (0) 88-672-4111

Open from 7:30 AM to 4:30 PM, Open year-round



4. Aisen-an Temple - Inubushi Kyusuke Statue

The Aisen-an houses have a seated statue honoring Inubushi-Kyusuke, who greatly contributed to the development of indigo in Tokushima.

●-1, Matsutani-Yamanouchioku, Itano-cho, Itano County
TEL: (+81) (0)88-672-5888 (Itanocho Cultural Museum)



Inubushi Kyusuke improved the dyeing production of Ai-indigo.

5. Kamiita-cho, Waza-no-Yakata

Kamiita Town is Japan's largest producer of the "Sukumo" indigo dye and has the largest farming area of Ai-indigo. At the Waza-no-Yakata (Museum of Skills), the staff will carefully show visitors on the Ai-indigo dyeing process.

●-32-4, Izumidani-Harahigashi, Kamiita-cho, Itano County
TEL: (+81) (0)88-637-6555

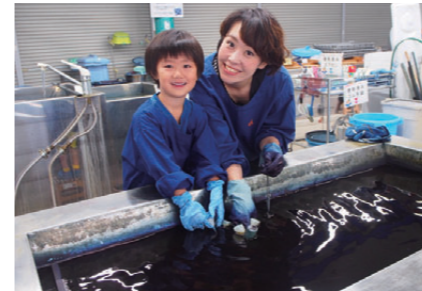
Open from 9:00 AM to 5:00 PM, (Indigo dyeing experience available until 3:30 PM)
Closed on Mondays (Tuesday if it is a public holiday), End of Year and New Year holidays



★Ai-indigo dyeing experience

Even small children can experience indigo dye. Parents and children can also make matching indigo dyed T-shirts.

-Reservation required a day ahead.



6. Watanabe's

This is the workshop of Kenta Watanabe who cultivates Ai-indigo in Kamiita Town and handles everything from the dye-making to the dyeing, the manufacturing and selling of products. You can

experience indigo dyeing and workshops can be held here. In addition, English and Chinese support is available.

●-314-10, Sebe, Kamiita-cho, Itano County
URL: <https://www.watanabezu.com/> Reservations Only
To dye hand towels, handkerchiefs etc.: 2,000yen. Dye cost: 30yen/gram. Inquiries and requests must be made in advance.



While working in Tokyo, Mr. Watanabe was fascinated by his experience of indigo dyeing and started his practice in Tokushima.



Original products are sold at the workshop and online.

7. Tanaka Family Residence

A family of indigo merchants that has continued for generations since the early Edo period. The residence took about 30 years to complete from 1854. The vast grounds are lined with indigo-colored lodgings, barns and main buildings. Designated as a nationally important cultural property.

●-Aihata, Ishii-cho, Myozai County
TEL: (+81) (0) 88-674-0707

A tour is available only on Sundays and national holidays



The large thatched roof is designed to float in the water when the Yoshino River overflows.

Hot spring All-Natural Hot Spring Goshou-no-Sato

●-1, Yoshidanashinokibara, Donari-cho, Awa City
TEL: (+81) (0) 88-695-4615
Open from 10:00 AM to 10:00 PM.
Closed on the 4th Wednesday of every month



A single-day natural hot spring facility located just outside the Donari IC. In addition to various kinds of baths, there are also massages and restaurants featuring Japanese cuisines.

- 1 The Tokushima Castle Museum
Approx. 13 km About 20 minutes by car
- 2 Aizumi Town History Museum, the Ai-no-Yakata
Approx. 7 km Approx. 15 minutes by car
- 3 Jizo-ji Temple Okunoin, The Gohyaku Rakan
Approx. 1 km Approx. 5 minutes by car
- 4 Aisen-an Temple - Inubushi Kyusuke Statue
Approx. 4 km Approx. 10 minutes by car
- 5 Kamiita-cho, Waza-no-Yakata
Approx. 5 km Approx. 10 minutes by car
- 6 Watanabe's
Approx. 7 km Approx. 15 minutes by car
- 7 Tanaka Family Residence



A 2-day tour of sites north of Yoshinogawa

Day 1 (Walk from JR Awa-ōtani Station)

1.Otani Yaki Kamamoto, Mori-Toki Pottery

Otani-yaki is the representative pottery of Tokushima Prefecture with a history of about 240 years. The pottery features a glossy finish that is simple, yet powerful. In addition to selling Otani-yaki pottery, the shop offers painting and pottery making experiences.

●-24, Otani-Irinokata, Oasa-cho, Naruto City
TEL: (+81) (0) 88-689-0022

Open from 8:30 AM to 5:00 PM,

Sundays Open from 9:30 AM to 4:30 PM, (Reception open until 3:30 PM), Year-end and New Year holidays (workshop closed on Sundays.) Painting 935 yen-, Hand pottery 2,200 yen, Electric pottery wheel 3,300 yen *Reservations reqd.



Mori Toki pottery uses the traditional technique of the "sleeping pottery wheel" to make large pots used in indigo dyeing.

2.Honke Matsuura Brewery

Free tours available with sake tasting at this renowned brewery, founded in 1804. Reservation reqd.

●TEL: 0120-866-140 (Tours and business hours: 10:00 AM to 6:00 PM)

Closed: Jan 1-3

Free of charge for tours (30 min. required)



3.Fukuju Shoyu

Established in 1826, they have continued to make soy sauce and miso using traditional methods. The soy sauce they offer is free of additives and colorings and fermented for more than a year to create its wonderful flavor and aroma. A tour of the brewery is free (Reservations required), along with sample tastings and shopping.

●8, Ikenotani-Oishi, Oasa-cho, Naruto City

TEL: (+81) (0)88-689-1008

Open from 8:30 AM to 5:00 PM,

Tours are 9:00AM~5:00PM

closed on Sundays and national holidays



Take a stroll (approx. 5 min.) from Fukuju Shoyu to Awa-Otani Station and take the JR line to Bando Station

Restaurant

Otorien

●-33-4, Bando-Nishiyamada, Oasa-cho, Naruto-shi
TEL: (+81) (0)88-689-3523
Restaurant open from 11:00 AM to 2:00 PM and after 5:00 PM to 19:00 PM / Closed on Wednesdays



A restaurant and inn next to the first temple of the Shikoku Pilgrimage. The lotus root dishes of Naruto and their famous udon are popular.

4.The Naruto German House

A memorial hall to preserve the cultural exchange between the German soldiers who lived in the "Bando POW Camp" in Naruto City from 1917 to 1920 and the local people. The facility features the daily lives in the camp. There is also a performance by life-sized dolls of German soldiers.

●-55-2, Hinoki-higashiyamada, Oasa-cho, Naruto City
TEL: (+81) (0)88-689-0099

Open from 9:30 AM to 5:00 PM, (Admission until 4:30), Closed on the 4th Monday of every month (the following day if it is a national holiday), end of year



The museum also sells German beers and wines.

Michi-no-Eki "Daiku no Sato"

It was built by transferring a part of the barracks from the Bando POW camp, a nationally registered and tangible cultural property. You can buy seasonal vegetables, fruits and specialties of Naruto.

●-53, Hinoki-higashiyamada, Oasa-cho, Naruto City
TEL: (+81) (0)88-689-1119

Open from 9:30 AM to 5:00 PM,

Closed on the 4th Monday of every month (the following day if it is a national holiday), end of year



You can enjoy authentic sausages from Germany at the snack corner.



The city of Naruto and Luneberg are working to register the materials related to the Bando Camp as a "UNESCO Memory of the World"

5.German Village Park

A large park built on the former site of the Bando POW Camp. From the German House, head south and walk 10-minutes to the entrance of this park. Nearby are stone bridges built by German soldiers.

●-Bando, Oasa-cho, Naruto City

TEL: (+81) (0)88-684-1157

(Naruto City Tourism Promotion Division)



The entrance gate to the German Village Park



In the park, there is a memorial monument that was built by German soldiers to mourn eleven comrades, who died.

Restaurant

Funamoto Udon Oasa Store

●-10-1, Hinokinogaminokita, Oasa-cho, Naruto City
TEL: (+81) (0)88-689-4358
Open from 10:30 AM to 2:30 PM (closed after running out of ingredients), Closed on New Year's day



A long-established branch of "Naruchuru Udon Noodles." The broth made from seafood and kelp, combined with the thin and soft noodles is delicious.

Day 2 (by car)

6.Asutamuland Tokushima

A large park centered around the "Children's Science Museum" where you can enjoy nature and science. There is also a playground zone, a windmill hill and a restaurant.

●-45-22, Nato-Kibigadani, Itano-cho, Itano County

TEL: (+81) (0) 88-672-7111

Open from 9:30 AM to 5:00 PM,

(open 1 hour longer during summer) Closed on Wednesdays (the next day if it is a national holiday, and open from August 12th to the 15th)



You can enjoy walking among the flowers at the windmill hill.

Restaurant

Gosho-no-Tarai Udon

●-Miyakawauchi, Donari-cho, Awa City
Approx. 5 min. by car from the Tokushima Expressway Donari IC

The local dish of Awa City where Udon noodles are put in a large wooden tray and served with dipping sauce. There are several specialty shops along the No. 318 National Route towards the mountains.



Awa City Tourist Association Tarai Udon Page

- Awa-ōtani Station
- Day 1
 - 1 Otani Yaki Kamamoto, Mori-Toki Pottery
Approx. 0.4 km | Approx. 5 min. by foot
 - 2 Honke Matsuura Brewery
Approx. 0.6 km | Approx. 7 min. by foot
(across the road)
 - 3 Fukuju Shoyu
Approx. 0.4 km | Approx. 5 min. by foot
(Awa-ōtani Station)
(Bando Station) approx. 2 km | Approx. 25 min. by foot
 - 4 The Naruto German House
Approx. 1 km | Approx. 10 min. by foot
 - 5 German Village Park
 - Day 2
 - 6 Asutamuland Tokushima
Approx. 8 km | Approx. 15 min. by car
 - 7 Hattori Sugar Refinery
Approx. 8 km | Approx. 15 min. by car
 - 8 Michi-no-Eki, Donari



A 2-day tour along the east coast of Shikoku

Day 1

1. Wadajima Ote Coast

The coast on the east of Cape Wadajima near an Self-Defense Force base is popular among anglers. You will find the eatery "Komatsuya."
●Ote Coast Wadajima-cho, Komatsushima City



The coast has a view of both Ohnaruto Bridge and Awaji Island.

Restaurant

Wadajima Whitebait Rice Bowl

●Wadajima Fishery Cooperative Chirimen-no-mise TEL:0120-4147-52
Open from 9:00 AM to 5:00 PM, Closed on Sundays and national holidays
●JF Wadajima Fishery Cooperative Women's Association Amimoto-ya
TEL: (+81) (0) 80-6287-8000
Open from 10:00 AM to 2:00 PM, on Sundays (from May to December)



Fishing season is between May and December; you can enjoy whitebait rice bowl at eateries including "Chirimen-no-mise" and "Amimoto-ya."

2. Hama Shoyu Jozojo

Established in 1897, the brewery uses domestic chemical-free soybeans, Tokushi-made wheat and rice, and natural salt to devote time and effort in producing soy sauce and miso. The brewery also offers miso-making workshop.

●34 Wakamatsu, Tatsue-cho, Komatsushima City
TEL: (+81) (0) 885-37-1128
Open from 9:00 AM to 5:00 PM,
Irregular holidays



Miso is made by mixing soy beans, koji (malted cereals) and salt.

3. Komatsushima Station Park

At 5 meters tall, the world's largest tanuki statue will greet you at the plaza; at the rear is a cascade that gushes out water with the clap of your hands. The statue was made after an old legend related to Komatsushima's tanuki.

●Komatsushima-cho, Komatsushima City
TEL: (+81) (0)885-32-2118 (Komatsushima City Hall)



Market

Aisai-hiroba

●47-3 Sumiyagadani, Tatsue-cho, Komatsushima City
TEL: (+81) (0)885-38-0112
Open from 8:30 AM to 5:30 PM,
Closed on third Tuesdays and New Year holidays



A large, popular market on a hill, offering locally grown fresh produce.

4. Tokushima Shinsen Nattoku-ichi

A complex facility comprised of restaurants and recreational sites by the sea. There is a BBQ area, a fishing pond where you can later eat your catch, and shops that sell Tokushima's local products.

●2-14 Higashiokinosu, Tokushima City
TEL: (+81) (0) 88-676-3335 (Restaurant Wabisabi)
Open from 11:00 AM to 3:00 PM, 5:00 PM to 8:00 PM (Wabisabi)

*Holidays differ depending on other facilities and days of week; irregular holidays



Mr. Akihiro Hama, patriarch of Hama Shoyu (to the left).

5. Awa Shirasagi Ohashi and Komatsu Coast

Awa Shirasagi Bridge is one of the largest river bridges in Japan, and was designed to protect creatures and migratory birds in the tideland. Komatsu Kaigan, which is located in the northeast, is a popular coast among surfers and swimmers.



It commands a view of the Yoshino River and the ocean.



6. Tsukimigaoka Seaside Park

You can see the planes taking off and landing at Tokushima Awaodori Airport up close. The park operates as a picnic / BBQ / moon-viewing site and dog park. Staying overnight at the cottages is also popular.

●42 Yamanote, Toyooka, Matsushige-cho, Itano County
TEL: (+81) (0) 88-699-6697 *Application required on the day for use of barbecue facilities.
URL: <https://www.tsukimigaoka.com/>



Cafe

Hallelujah Sweets Kitchen Matsushige Main Store

●30 Yonnokoshi, Kitakawamukai, Hiroshima, Matsushige-cho, Itano County
TEL: (+81) (0) 88-699-7611
Open from 9:30 AM to 5:30 PM, Closed on New Year's Day



A renowned confectionery in Tokushima. Tanuki-shaped cake baking classes offered on Wednesdays, Saturdays, and Sundays are popular (reservation required)

Day 2

7. Ohnaruto Bridge Promenade: Uzu-no-michi

A promenade built above the sea on Ohnaruto Bridge. At the observatory, you can watch the whirling waves 45 meters below via a glass floor.

●Within Naruto Park (Naruto-cho, Naruto City)
TEL: (+81) (0) 88-683-6262
Open from 9:00AM to 6:00 PM, (between March and September); 8:00AM to 7:00PM (Golden Week Holiday and Summer Holiday); 9:00AM to 5:00PM (between October and February) (last admission should be made 30 minutes before closing time)
Closed on 2nd Mondays of March, June, September and December



8. Naruto Park Senjojiki Observatory

The site commands a stunning view of Ohnaruto Bridge and Naruto Channel. You will also find rows of local cuisine spots and souvenir shops.

●Tosadomariura, Naruto-cho, Naruto City
TEL: (+81) (0)88-684-1157
(The city's Tourism Promotion Section)



Senjojiki Observatory is a perfect spot to take commemorative photos.

9. Otsuka Museum of Art

The museum displays around 1,000 masterpieces of Western art ranging from ancient times to the present, replicated on full-scale porcelain tiles. You can appreciate Leonardo da Vinci's "The Last Supper" and Picasso's "Guernica" here.

●Within Naruto Park (Naruto-cho, Naruto City)
TEL: (+81) (0)88-687-3737
Open from 9:30 AM to 5:00 PM,
(tickets are sold until 4:00PM) Closed on Mondays (the next day if Monday falls on holiday); successive holidays in January; temporary closure may take place; open everyday on August



"Sistine Hall"
This picture shows work exhibited at Otsuka Museum of Art.



At Sistine Hall, Michelangelo's "The Last Judgment" is replicated in full-scale. Image courtesy of Otsuka Museum of Art

10. Uzushio Kisen

It takes about three minutes to reach near the whirling waves from the port; from the ship you can watch the waves swirl. The boarding area is right next to Otsuka Museum of Art.

●65-63 Fukuie, Tosadomariura, Naruto-cho, Naruto City
TEL: (+81) (0) 88-687-0613
Open from 8:00 AM to 5:00 PM,
(Last ship departs on 4:30PM) No holidays (operation will be suspended in rough weather)



Restaurant

Arashi

●51-1 Kitanohama, Okuwajima, Muya-cho, Naruto City
TEL: (+81) (0) 88-686-0005
Open from 11:00 AM to 9:00 PM, Closed on Wednesdays



The restaurant offers budget-price cuisine made from seasonal and fresh finny tribe off Naruto.

Cafe

Terrace Cafe Ohge

●16-45 Oge, Tosadomariura, Naruto-cho, Naruto City (AoAwo Naruto Resort 1F)
TEL: (+81) (0) 88-687-2580
Open from 8:00 AM to 11:00 PM, Open everyday



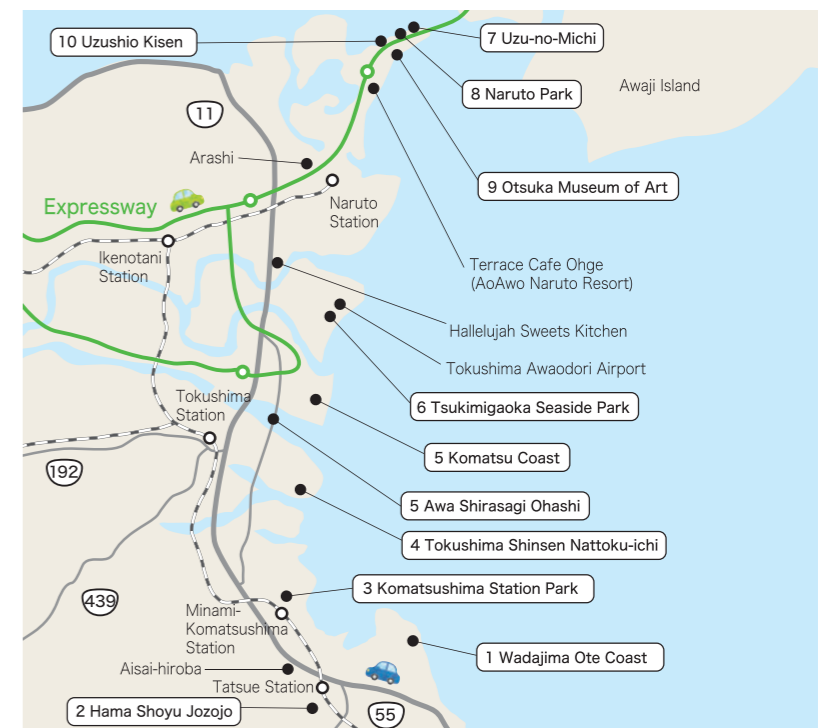
Located on the first floor of the hotel, the site commands a fine view of the ocean and Awaji Island. Enjoy local dishes and pastry.

Day 1

- 1 Wadajima Ote Kaigan
Approx. 6 km | Approx. 10 min. by car
- 2 Hama Shoyu Jozojo
Approx. 7 km | Approx. 15 min. by car
- 3 Komatsushima Station Park
Approx. 11 km | Approx. 25 min. by car
- 4 Tokushima Shinsen Nattoku-ichi
Approx. 8 km | Approx. 15 min. by car
- 5 Awa Shirasagi Ohashi - Komatsu Kaigan
Approx. 12 km | Approx. 25 min. by car
- 6 Tsukimigaoka Seaside Park
Approx. 18 km | Approx. 30 min. by car

Day 2

- 7 Ohnarutokyo Promenade: Uzu-no-michi
(a short walk)
- 8 Naruto Park Senjojiki Observatory
Approx. 1.5 km | Approx. 3 min. by car
- 9 Otsuka Museum of Art
Approx. 200 m | Approx. 1 min. by car
- 10 Uzushio Kisen



A 2-day tour of rural villages

Day 1

1.Okawara Plateau

This highland--which is within the village of Sanagochi about 30 minutes by car from Tokushima Station--commands a marvelous view from an altitude of 1,019 meters. Hydrangea blooms in the summer, and during clear nights, the beautiful starry sky spreads out before your eyes.

●Okawara, Sanagochi-Village
TEL: (+81) (0) 88-679-2111(Sanagochi Village Office)



2.Michi-no-eki Onsen-no-Sato Kamiyama

Located near Kamiyama Onsen, this is where sightseeing in Kamiyama-cho starts. Its farmer's market offers locally grown fresh veggies and edible wild plants at budget prices.

●151-1 Nishiuetsuno, Jinryo, Kamiyama-cho, Myozai County

TEL: (+81) (0) 88-636-7077
Open from 9:00AM to 6:00PM (March to October)
9:00AM to 5:00 PM(November to February) Closed on 3rd Tuesdays (open if the day falls on national holiday)



3.KAMIYAMA BEER

A small beer brewery operated by Irishman Mr. Manus Sweeney and artist Ms. Sayaka Abe. They produce a unique beer using locally grown citrus fruits and plum trees.

●280-1 Nishiuetsuno, Jinryo, Kamiyama-cho, Myozai County (near Kamiyama Onsen)



Ms. Sayaka Abe designed the bottle labels and exterior walls of "KAMIYAMA BEER."

URL:<http://www.kamiyamabeer.com/>
Open taproom: 12:00PM to 6:00PM on Saturdays and Sundays (hours may change, so check website before visiting); irregular holidays for the shop; 10 table seats available

Each pint of craft beer has a flavor unique to its ingredients.

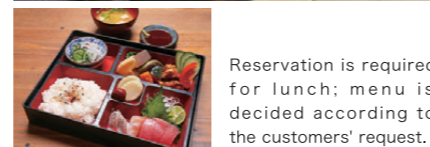


5.Noka-minshuku Saraya

A farmer's inn made by renovating an old house built more than 150 years ago. Meals cooked by the owner, which use local products, is superb. Activities include wild veggie picking, playing at riverside, and soba noodle cooking class.

●240 Nishinoma, Jinryo, Kamiyama-cho, Myozai County
TEL: (+81) (0) 88-636-7767

Lunch: Open from 11:00 AM to 2:00 PM,(Reservation required at least 2 days in advance for 2 or more people.)
Lunch-1500yen. Overnight stay w/no meal- 5800yen.
Dinner-1200yen. Breakfast-800yen. (tax not. Incl.)



Reservation is required for lunch; menu is decided according to the customers' request.

4.Shosan-ji Temple, the 12th temple of Shikoku Pilgrimage

This temple is the second highest among 88 temples of Shikoku Pilgrimage. The approach to the temple is lined with tall cedars which are over 500 years old; it is cool and quiet here even in summer.

●318 Naka, Shimobun, Kamiyama-cho, Myozai County
TEL: (+81) (0) 88-677-0112



It takes about 10 minute on foot from the parking lot to the temple.

Cafe Matsuba-an

●58 Kitauetsuno, Jinryo, Kamiyama-cho, Myozai County
TEL: (+81) (0) 88-676-1415
Open from 10:00 AM to 8:00 PM,
Open for lunch from 11:30 a.m. to 3:00 p.m.Daily specials end as soon as they are sold out.
Closed on Tuesdays * No smoking



A well-established coffee shop representing Kamiyama, offering home roasted coffee. Rinkaku restaurant. Lunch 11:30-. Dinner 5:30-. Reservations reqd. You can also enjoy Japanese cuisine made from seasonal ingredients.



Restaurant Kamaya

●190-1 Kita, Jinryo, Kamiyama-cho, Myozai County
TEL:050-2024-2211
Open hours: Breakfast 8:30-10:00 *Sat/Sun only, (only for reservations made by the day before).
Lunch 11:00 AM to - 4:00 PM (last order 3:00) *Sat, Sun and holidays - by 6:00 PM (L.O 5:00).
Closed Mon and Tues (open if it is a holiday)
Closed on Mondays and Tuesdays (Open falls on a national holiday)



Meals are made from homegrown rice, vegetables cultivated without chemical fertilizers / pesticides, and local produce. Rice is cooked in "kamado" (old Japanese cooking stove)

Day 2

Avoid driving in mountainous regions at night / winter when visiting Kamikatsu-cho from Kamiyama-cho; Drive toward Komatsushima.

6.Kashihara's Tanada

Around 500 terraced paddy fields of every size scatter the area at the altitude of between 500 m and 700 m.

●Ikumi, Kamikatsu-cho, Katsura County
TEL: (+81) (0) 885-46-0111

(Industrial Section, Kamikatsu Town Office) * Park your car at the parking lot; it is about 200 m to the fields.



Cafe polestar

●32-1 Hirama, Fukuhara, Kamikatsu-cho, Katsura County
TEL: (+81) (0) 885-46-0338
Open from 11:00 AM to 5:00 PM, (LO 4:00)
Closed on Thurs, Fri and Sat.



Offers tasty set menu meals and Carefully prepared curries and cakes. The business practices zero waste living deployed by Kamikatsu-cho.

7.Tsukigatani Onsen Tsuki-no-yado

A hot spa located along Katsuuragawa River; you can enjoy the scenery of nature from the bath house. At the restaurant, savor local dishes of Kamikatsu-cho.

●71-1 Hirama, Fukuhara, Kamikatsu-cho, Katsura County
TEL: (+81) (0) 0885-46-0203
hot spa : Open from 10:00 AM to 8:00 PM,
restaurant : Open from 11:00 AM to 7:30 PM,
URL : <https://www.e-kamikatsu.jp/>



The source comes from a mountain where Kobô received training. A suspension bridge next to the hot spring. At a foot of Daishi, a high priest, "Happa Business" (local leave-picking business).

8.Ikkyu-chaya

Located along Prefectural Road 16, the store on the 1st floor offers vegetables, fruits and processed products made in Kamikatsu Town. On the 2nd floor is a restaurant commanding a fine view.

●76-12 Shimohiura, Fukuhara, Kamikatsu-cho, Katsura County

TEL: (+81) (0) 885-46-0198
Open from 8:30 AM to 3:00 PM,
Closed on Tuesdays



9. RISE&WIN Brewing Co. BBQ&General Store

A brewery practicing zero waste living deployed by Kamikatsu-cho. You can enjoy craft beer and BBQ made with local products.

●237-2 Hirama, Masaki, Kamikatsu-cho, Katsura County

TEL: (+81) (0)885-45-0688
Open from 11:00 AM to 5:00 PM,
(reservation required after 5:00PM);
Closed on Mondays and Tuesdays



10.Shokoku-ji Temple, Fudo-no-taki

Shokoku-ji is a temple on top of Katsura-cho's mountain. There is a waterfall, Fudo-no-taki, which features a vertical drop is 15 meters. The waterfall can be observed from behind.

●126 Nodao, Hoshitani, Katsura-cho, Katsura County

TEL: (+81) (0) 885-42-2552
(Katsura Town)



Day 1

- 1 Okawara Plateau
Approx. 22 km | Approx. 40 min. by car
- 2 Michi-no-eki Onsen-no-Sato Kamiyama
Approx. 1 km | Approx. 3 min. by car
- 3 KAMIYAMA BEER
Approx. 12 km | Approx. 30 min. by car
- 4 Shosan-ji Temple, the 12th temple of Shikoku Pilgrimage
Approx. 10 km | Approx. 25 min. by car
- 5 Noka-minshuku Saraya

Day 2

- 6 Kashihara's Tanada
Approx. 7 km | Approx. 25 min. by car (parking lot)
- 7 Tsukigatani Onsen Tsuki-no-yado
Approx. 7 km | Approx. 25 min. by car
- 8 Ikkyu-chaya
Approx. 3 km | Approx. 5 min. by car
- 9 RISE&WIN Brewing co. BBQ&General Store
Approx. 13km | Approx. 25 min. by car
- 10 Shokoku-ji Temple, Fudo-no-taki

Veer to the direction of Komatsushima-shi and take Prefectural Road 16
Approx. 56 km | Approx. 1 hour and 30 min. by car



A 2-day tour of mountains and rivers

Day 1

1. Awa-no-Dochu (Earth Pillars)

The dochu is a landform that is rare in the world. About a million years ago, seismic activity uplifted the earth to accumulate layers of earth and sand. Over a long period of time through wind and rain, these layers were eroded into these pillars made of earth. The largest of these is the Hatogatake, a nationally designated natural monument of earthen walls that reach as high as 10 meters. They are lit up at night.

● Sakuranooka, Awa-cho, Awa City
TEL: (+81) (0) 883-35-4211 (Awa City Tourist Association), Light-up Time: in Summer (May to August) Sunset to 10:00 PM, in Winter (September to April) Sunset to 9:00 PM



A natural artwork of earth pillars made from nature. There is also a hiking trail.

2. The Hall of Awa Japanese Handmade Paper

It is said that paper making in Awa began here at Oe (present-day Yoshinogawa City) in the 8th century. Inside, you can observe the process of making handmade Japanese paper and have hands-on experience making postcards. Other attractive features are the gallery and museum shop.

● 141, Kawahigashi, Yamakawa-cho, Yoshinogawa City
TEL: (+81) (0) 883-42-6120



The umeshu-plum wines made with various kinds of ume-plums have a unique taste at each brewery.



4. The Misato Hotarukan (Firefly Museum)

The entire region of Misato is home to the hotaru (fireflies), which are nationally protected species. At the Hotaru-kan, you can learn about the ecology of fireflies, the climate, and the history of Misato. The best time to see fireflies is from late May to mid-June every year.

● 82-1, Misato-Muneda, Yoshinogawa City
TEL: (+81) (0) 883-43-2888



Open from 9:00 AM to 4:30 PM (open until 9:30 PM during the firefly festival). Closed on Tuesdays (Wednesdays if Tuesday was a national holiday) and Year-End and New Year's holiday (Open every day during the firefly festival)



3. The Misato Produce Museum, the Misatoya

The local specialty of Misato, Yoshinogawa City is plum, and the store offers umeshu-plum wines made by 5 local breweries and handmade umeboshi-plums, as well as seasonal wild plants and vegetables. Guests can also enjoy dining here too.

● 463-3, Misatotouge, Yoshinogawa City
TEL: (+81) (0) 883-26-7888

Open from 10:00 AM to 5:30 PM, Closed during the Year-End and New Year's Holidays

Lunch

Ki-no-Yume the Totori

● 498, Misatotadaira, Yoshinogawa City / TEL: (+81) (0) 883-43-2373
Lunch from 11:00 AM to 3:00 PM (please inquire)
*Please make a reservation a day before
Overnight stay w/o meal: ¥4,500 / 1 overnight stay w/ 2 meals: ¥6,500 (limited to 1 pair of guests per day) *Non-smoking



A farmer's inn and restaurant where you can enjoy dishes made from the vegetables grown by the owner and wild vegetables picked at the nearby mountains. You can also order macrobiotic dishes.

Lunch

Farmhouse-Inns & Restaurants Kinoko-no-Sato

● 199-1, Misatotadaira, Yoshinogawa City / TEL: (+81) (0) 883-43-2370
Lunch from 11:30 AM to 2:00 PM (please inquire)
*Please make a reservation a day before
Overnight stay w/o meal: ¥4,500 / 1 overnight stay w/ 2 meals: ¥6,500 *Non-smoking

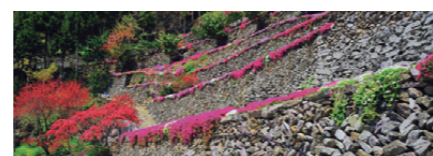


Enjoy macrobiotic cuisines that use no animal-based products such as sushi made with brown rice and vegetables.

5. The Stone Masonry of Takagai

Various stone-built terraced fields are scattered around Takagai village, with the highlight being a view extending to the mountain tops. In spring, the Shibazakura (Phlox subulata) blooms all over the stone masonry along with a festival being held to commemorate the occasion.

● 310, Misato-Oogami, Yoshinogawa City
TEL: (+81) (0) 883-43-2888 (The Misato Hotarukan)



The Shibazakura Festival is held from early to late April every year.



There is also a light-up event in December.

6. Hands-on Farmhouse-Inn and Restaurant, the Dokomoyama

A farmhouse-inn where you can have hands-on experience in making dye from the indigo grown in the fields to the actual indigo dyeing process. In addition, there are various other hands-on experiences offered such as soba noodle making and pizza baking in a stone oven.

● 14-2, Misato-Maruyama, Yoshinogawa City
TEL: (+81) (0) 883-43-2970
Overnight stay w/ 2 meals: ¥6,500 yen, accommodation capacity for 9 persons (limited to 1 group per day)



Mr. and Ms. Inoue of the Dokomoyama. The indigo dyed clothes are homemade.

Day 2

7. Kawashima Park and Iwanohana Observatory



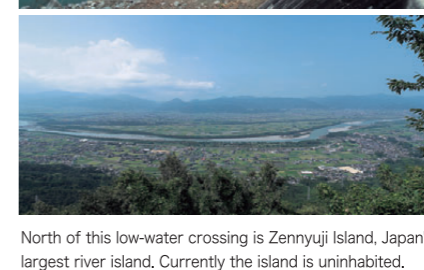
A park in the area surrounding Kawashima Castle (restored circa 1981). The view of the river and mountains from the Iwanohana Observatory is fantastic. Beautiful cherry blossoms show up in spring.

● Shiroyama, Kawashima-cho, Yoshinogawa City
TEL: (+81) (0) 883-22-2226 (Business, Commerce and Tourism Division, of Yoshinogawa City)
*Kawashima Castle is currently closed.



8. The Kawashima Sensuikyo Bridge (Low-Water Crossing)

This 3-meter wide and 285-meter long low-water crossing is located close to the Yoshinogawa river and has a nice view of the surroundings. You can enjoy a view of the rapeseed plants blossoming during spring.



North of this low-water crossing is Zennyuji Island, Japan's largest river island. Currently the island is uninhabited.

9. Kakiharazeki-Weir

A 790-meter long weir that crosses the Yoshinogawa River, built about 100 years ago. You can see many birds tracking the fishes swimming here.

● Kakiyama, Yoshino-cho, Awa City
TEL: (+81) (0) 883-35-4211 (Awa City Tourist Association)



10. Yoshinogawa-Daijuzeki-Weir

A 1,000-meter long and 30-meter wide stone weir that was built on the Yoshinogawa River in the middle of the 18 century. The view from the clear stream is pleasant and relaxing.



Day 1

- 1 Awa-no-Dochu
Approx. 9 km | Approx. 20 min. by car
- 2 The Hall of Awa Japanese Handmade Paper
Approx. 5 km | Approx. 10 min. by car
- 3 The Misato Produce Museum
Approx. 2 km | Approx. 5 min. by car
- 4 The Misato Hotarukan
Approx. 4 km | Approx. 15 min. by car
- 5 The Stone Masonry of Takagai
Approx. 15 km | Approx. 35 min. by car
- 6 The Dokomoyama
(Approx. 13 km from the Dokomoyama and about 30 minutes by car)

Day 2

- 7 Kawashima Park and Iwanohana Observatory
Only a short drive by car
- 8 The Kawashima Sensuikyo Bridge
Approx. 6 km | Approx. 10 min. by car
- 9 Kakiharazeki-Weir
Approx. 11 km | Approx. 15 min. by car
- 10 Yoshinogawa-Daijuzeki-Weir



more East Tokushima Sightseeing Spots

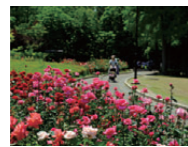
Noted Flowers and Scenery Spots
Parks and Recreation
History and Education

Eastern Tokushima has many attractive tourist attractions such as its magnificent nature and historical buildings. Here are some recommended spots you should visit.

1 Tokushima Central Park Rose Garden

Tokushima City

The ruins of Tokushima Castle. There is a rose garden with about 400 roses on the eastern promenade.



1, Jonai, Tokushima-cho, TokushimaCity

2 Tokushima Botanical Garden

Tokushima City

You can observe the seasonal flowers and trees that suit the climate of Tokushima.

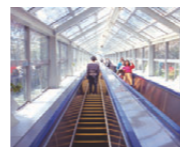


(+81) (0) 88-636-3131
45-1, Nyudo, Shibuno-cho, TokushimaCity /
Open from 9:30 AM to 4:00 PM

3 Eska Hill Naruto

Naruto City

Climb the 68-meter escalator to enjoy the view of the Naruto Strait.



(+81) (0) 88-687-0222
65, Tosadomariura-Fukuike, Naruto-cho,
NarutoCity / Open from 9:00 AM to 5:00 PM
/ Irregular Holiday / Round-Trip: Adult
¥400, Elementary and Junior Highschool
Students ¥100, Infants free of charge

4 Naruto Skyline

Naruto City

An 8-km long driveway where you can enjoy the beautiful scenery of the Uchino Sea.



Tosadomariura, Naruto-cho, NarutoCity to
Kushiki, Kitanada-cho

5 Toride Naruto

Naruto City

A facility modeled after Muya-jo Castle keep. You can overlook the city of Naruto from the top floor.



60-8, Hayasakiminamitono-machi, Muya-cho,
NarutoCity / Open from 9:00 AM to 4:00
PM on Saturdays, Sundays and National
Holidays

6 Hanamiyama

Naruto City

A noted spot where you can see the Naruto Strait along with 400 weeping cherry trees. Other seasonal flowers and trees such as azalea, yellow plum, sasanqua, and camellia can also be enjoyed.



(+81) (0) 88-687-3555
234-35, Tosadomariura-Ooge, Naruto-cho,
NarutoCity

7 Kitajima Tulip Park

Kitajima Town

From early to late April, 48,000 tulips of about 65 varieties bloom.



Higaino, Nakamura, Kitajima-cho,
ItanoCounty

8 Hyakute Levee

Kitajima Town

A popular walking course with a view of the Imagirekawa River.



Nakamura-Kuwanosaki, Kitajima-cho,
ItanoCounty

9 Aizumi Town Rose Garden

Aizumi Town

Approximately 300 kinds and 1,100 roses are planted here, with the variety and number being the largest in the prefecture.



263-88, Yakamihara, Aizumi-cho,
ItanoCounty

10 Shohojigawa River Park

Aizumi Town

Home to the longest wooden bridge in western Japan, the "Midoribashi Bridge," and the cherry blossoms along the river are beautiful during spring.



Yakamihara, Aizumi-cho, ItanoCounty

11 Sakuradutsumi Park

Aizumi Town

The cherry blossoms bloom beautifully during spring in this big park.



51-1, Higashinakatomi-Nishihouji, Aizumi-cho,
ItanoCounty

12 Asebi Park, Observation Deck

Itano Town

There are clusters of around 2,000 asebi (Japanese pieris). You can overlook the Tokushima Plain and the Seto Inland Sea from the summit.



Osaka, Itano-cho, ItanoCounty

13 Matsushima Senbonzakura (1,000 cherry trees)

Kamiita Town

From late March to early April, a thousand Someiyoshino cherries and Yaezakura cherries bloom.



Izumidani, Kamiita-cho, ItanoCounty
(Livestock Research Institute)

14 Cherry Road Line

Yoshinogawa City

The owner of the Murata Inn has been planting trees for many years over the entire 30-km long road of cherry blossoms.



From Kawashima-cho, YoshinogawaCity to
Misato (along Prefectural Road Route 43)

15 Egawa and Kamojima Park

Yoshinogawa City

A park themed on 5 old folk tales and is also famous for its cherry blossoms.



Kamojima, Kamojima-cho, YoshinogawaCity

16 Funakubo Azalea Park

Yoshinogawa City

Clusters of about 1,200 azaleas grow here, where the entire surface of the mountain turns red during May.



Okunoi, Yamakawa-cho, YoshinogawaCity

17 Mt. Kotsuzan

Yoshinogawa City

This mountain (alt.1,133m) is a popular place to hike.



Yuumayama, Yamakawa-cho, YoshinogawaCity

18 Jifukuji-no-Fuji

Ishii Town

Around the end of April, purple wisteria and white wisteria flowers that are over 200 years old bloom within the precincts.



321, Ishii, Ishii, Ishii-cho, MyozaiCounty

19 Wild Bird Forest

Ishii Town

You can observe about 50 kinds of wild birds including the Japanese white-eye and Meadow bunting.



Ishii, Ishii, Ishii-cho, MyozaiCounty

20 Maeyama Park

Ishii Town

This large site with an area of 7.18 hectares is complete with playground equipment. You can enjoy cherry blossoms during spring and the autumn leaves in autumn.



Jonouchi, Ishii, Ishii-cho, MyozaiCounty

21 Kamiyama Forest Park, the Forest of Il Losa

Kamiyama Town

Surrounded by valleys and mountains, there are various facilities such as the Forest Learning Center and observatory.



(+81) (0) 88-678-0114
459-1, Anooji, Kamiyama-cho, MyozaiCounty

22 Amagoi-no-Taki Waterfall

Kamiyama Town

One of the 100 best waterfalls of Japan. The waterfall is 45-meters high.



Jinryo-Ishido, KamiyamaTown Myozai County

23 Shikokusangaku Botanical Garden, Gakujin-no-Mori

Kamiyama Town

Many rare flowers and trees such as the rhododendron are planted here. You can also enjoy camping here.



(+81) (0) 88-677-1147
Dosutoge, Nakatsu, Kamibun, Kamiyama-cho,
MyozaiCounty / Apr 1-Nov 30. 8am-5pm. (Rest House
Kangetsu Teahouse open 10:00- *open irregularly) Closed-
Dec-Mar. (camping is possible year-round under certain
conditions) / Admission Fee ¥500(Free for children)

24 Cherry Blossoms on the Ikuna Roman Kaido Road

Katsuura Town

There are around 400 cherry trees blooming along the Ikunatanigawa River, where you can enjoy a boat ride when the cherry trees are in bloom.



(+81) (0) 90-8970-6728
35-3, Ikuna-Kaminoki, Katsuura-cho,
KatsuuraCounty

25 Mt. Irodoriyama and Irodori Bridge

Kamikatsu Town

A place for agricultural experience and cultivation research. The view from "Irodori Bridge" is superb.



Hirama, Fukuhara, Kamikatsu-cho,
KatsuuraCounty

26 Mt. Yamainudake

Kamikatsu Town

The moss covered rock formations are amazing. You can also enjoy a mini pilgrimage to the 88 temples.



Oaza Ikumi Kamikatsu-cho, KatsuuraCounty

27 Kanjo-gataki Waterfall

Kamikatsu Town

The waterfall has a drop of about 80 meters.



Masaki, Kamikatsu-cho, KatsuuraCounty

28 Tokushima Bunkanomori Park Tokushima City

There are 6 cultural facilities such as museums and a library here.



(+81) (0) 88-668-1111 Mukoterayama, Hachiman-cho, TokushimaCity

29 Mt. Benten Tokushima City

This is the lowest natural mountain in Japan; it has an altitude of 6.1-meters. A market called Benten-ichi is regularly held here.



8-1 Benzaiten, Katanokami-cho, TokushimaCity

30 Tokushima Zoo Kitajima Kensetsu-no-mori Tokushima City

Animals are kept in four climatic zones, including the tropics and savannas.



(+81) (0) 88-636-3215
22-1 Nyudo, Shibuno-cho, TokushimaCity / Open from 9:30 AM to 4:30 PM (last admission 4:00 PM) Closed on Mondays Fee: adult ¥600 (middle school students or younger are free)

31 Ohnaruto Bridge Crossing Memorial Hall (AKA: Eddy) Naruto City

A museum featuring whirlpools and bridges to introduce the culture and nature of Tokushima.



(+81) (0) 88-687-1330
65, Tosadomariurafukuike, Naruto-cho, NarutoCity / Open from 9:00 AM to 5:00 PM (last admission 4:30 PM) *May change due to season / Admission Fee: Adults ¥620, Junior and Highschool Students ¥410, Elementary School Students ¥260

32 Naruto Uchinoumi Park Naruto City

This park faces the scenic Uchino Sea, with plenty of leisure facilities such as camping.



(+81) (0) 88-687-3175
679, Takashimakita, Naruto-cho, NarutoCity

33 Boat Race Naruto Naruto City

A boat race course located beside the Konarutobashi Bridge. The facility also features a seafood restaurant and souvenir shop.



(+81) (0) 88-685-8111
48-1, Suberiawahama, Okuwajima, Muya-cho, NarutoCity / Admission Fee ¥100

34 UZU PARK Naruto City

A sports facility with a skateboard area and a cycling station.



(+81) (0) 88-685-8111
48-1, Suberiawahama, Okuwajima, Muya-cho, NarutoCity / Open from 7:00 AM to 8:00 PM

35 Hinomine Omiko Regional Park Tokushima City and Komatsushima City

Features various facilities such as tennis courts and one-day campsites.



(+81) (0) 88-662-6030
7-1, Omiko, Obara-cho, TokushimaCity / Tennis Court open from 9:00 AM to 9:00 PM (open until 5:00 PM during December to the end of February)

36 Shiokaze Park Komatsushima City

There are playground equipment modeled after airplanes and a wooden deck where you can see the ocean.



Shinko, Komatsushima-cho, KomatsushimaCity

37 Komatsushima Cycling Stadium Komatsushima City

Visitors can watch the cycling competition while enjoying a view that faces the stadium.



(+81) (0) 885-32-0290
5-57, Yokosu-cho, KomatsushimaCity / Free Admission

38 Family Sports Park Kamiita Town

This park has tennis courts, outdoor stages, and a heated pool etc.



(+81) (0) 88-694-6557
7, Tenno, Shichijo, Kamiita-cho, ItanoCounty / Open from 10:00 AM to 8:30 PM (open until 4:30 PM on Sundays and Holidays)

39 Ikimono Fureai-no-Sato (Animal Interaction) Nature Center Sanagochi Village

Instructors who are familiar and experts of insects and plants are stationed here. You can also enjoy camping in the great outdoors.



5-8, Okawara, Sanagochi-son, MyodōCounty / Open from 9:00 AM to 4:00 PM (campgrounds open during April 25th through September 30th) / Closed on Mondays

40 Katsuura Flight Park Katsuura Town

One of the best paragliding areas in Japan. Experience the exhilarating great outdoors!



114, Higashibarao, Mitani, Katsuura-cho, KatsuuraCounty / Open year-round (peak season is during May to September Sat, Sun, and national hol. *Reservations reqd.

41 Tadukawakeikoku Valley Katsuura Town

You can enjoy the natural boulders in this beautiful valley with lush trees and clear streams.



Tanano, Katsuura-cho, KatsuuraCounty

42 Kyoryu-no-Sato (Dinosaur Village) Katsuura Town

A site where dinosaur fossils were discovered. There are various dinosaur objects scattered here.



Tanano, Katsuura-cho, KatsuuraCounty

43 Tokushima Modern Art Museum Tokushima City

Paintings on the theme of 20-century humanity and works of art related to Tokushima are exhibited.



(+81) (0) 88-668-1088
Mukouterayama, Hachiman-cho, TokushimaCity / Open from 9:30 AM to 5:00 PM / Closed on Monday

44 Tokushima Prefectural Museum Tokushima City

The museum exhibits materials related to the nature, history, and culture of Tokushima as well as a complete skeleton of a dinosaur.



(+81) (0) 88-668-3636
Mukouterayama, Hachiman-cho, TokushimaCity / Open from 9:30 AM to 5:00 PM / Closed on Monday

45 Tokushima Prefectural Torii Ryuzo Memorial Museum Tokushima City

Materials and manuscripts of Dr. Ryuzo Torii, a pioneer of anthropology and archaeology are exhibited.



(+81) (0) 88-668-2544
Mukouterayama, Hachiman-cho, TokushimaCity / Open from 9:30 AM to 5:00 PM / Closed on Monday

46 Tokushima Prefectural Archives Tokushima City

A facility that collects and stores private documents compiled by the Tokushima prefectural government.



(+81) (0) 88-668-3700
Mukouterayama, Hachiman-cho, TokushimaCity / Open from 9:30 AM to 5:00 PM / Closed on Monday

47 Tokushima Prefectural Museum of Literature and Calligraphy Tokushima City

There are works by literary figures and calligraphers associated with Tokushima such as Jakuchō Setouchi.



(+81) (0) 88-625-7485
2-22-1, Nakamaekawa-cho, TokushimaCity / Open from 9:30 AM to 5:00 PM / Closed on Monday

48 Awa Deko Ningyo Kaikan Tokushima City

A general exhibition hall for Jōruri dolls, with around 100 wooden dolls on display.



(+81) (0) 88-665-5600
226-1, Miyajimahonura, Kawauchi-cho, TokushimaCity / Open from 9:00 AM to 5:00 PM / Closed on Sundays and the 1st and 3rd Monday of every month

49 The Tokushima Tengu-hisa Museum Tokushima City

workshop of Tengu-hisa, puppeteer who was a key supporter of the Awa Ningyō Jōruri.



72, Wadauchi, Kokufu-cho, TokushimaCity / Open from 9:30 AM to 4:00 PM / Closed on Monday through Wednesday

50 Awa Kokufu Street Corner Museum Tokushima City

A tour of the 10 cultural facilities of Kokufu Town, where many historic sites and cultural properties still remain.



+81) (0) 90-6283-8760
the TokushimaCity Kokufu-cho area / Reservations required

51 Ichinomiya-jinja Shrine and Ichinomiya-jo Castle Ruins Tokushima City

The largest mountain castle in the prefecture. The main hall of the Ichinomiya-jinja Shrine is a designated important cultural property.



244, Nishicho, Ichinomiya-cho, TokushimaCity

52 Joroku-ji Temple Tokushima City

A treasure house of important cultural properties such as the Sammon Gate built in the 16th century and the wooden seated statue of Sho Kannon.



+81) (0) 88-654-0334
32, Joryo, Joroku-cho, TokushimaCity

53 Shōzui-jo Castle Ruins Aizumi Town

The site and residence of the Miyoshi clan, a Sengoku feudal lord of the Awa Province. Excavated articles are also exhibited.



(+81) (0) 88-641-3466
29-2, Higashi-Katsuchi, Shozui, Aizumi-cho, ItanoCounty / Exhibition room open from 9:00 AM to 5:00 PM (Closed on Dec 29-Jan 3.)

54 TOKUSHIMA WOODEN TOY MUSEUM Itano Town

This is the largest "wood education museum" in Japan, with a space where visitors can play with carefully selected toys and a dedicated wood education room for children under 3 years old.



Visitors can also experience local culture. (+81) (0) 88-672-1122
45-22, Kibigadani-Nato, Itano-cho, ItanoCounty / Open from 9:30 AM to 4:30 PM (Scheduled from Jul 1 - Aug 31 to 5:30 p.m.) / Closed on Wednesday

55 Hatayama Yoshitsune Cavalry Statue Komatsushima City

A 6.7-meter tall statue of Minamoto no Yoshitsune on a horse stands on the top of the mountain.



Hatayama, Shibo-cho, KomatsushimaCity

56 Kamiita Town Museum of History and Folklore Kamiita Town

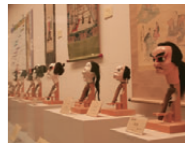
The facility exhibits the daily necessities of the past such as the Awa Wasanbon sugars, Awa Ai-indigo, etc.



(+81) (0) 88-694-5688
8-1, Izumidani-Haranakasuji, Kamiita-cho, ItanoCounty / Open from 9:00 AM to 4:30 PM / Closed on Monday, 12/28 - 1/4

57 Matsushige Town Museum of History and Folklore, Ningyō Joruri Shibai Museum Matsushige Town

They exhibit artworks and cultural properties related to the history of Matsushige Town and the Awa Ningyō Joruri puppet theater.



(+81) (0) 88-699-5995
11-1, Hiroshima-Yonbangoshi, Matsushige-cho / Open from 9:00 AM to 5:00 PM (until 9:00 PM on Thursday) / Closed on Mondays and the 3rd Tuesday of every month